

# Education Programs



**tree**climb



## Are you and your students looking for adventure to spark learning?

Our Education Programs outline the learning outcomes from their experience at TreeClimb, as well as relevant pre-climb and post-climb lesson plans and activities developed in collaboration with ACHPER SA (The Australian Council for Health, Physical Education and Recreation South Australian Branch Incorporated) to align with Australian Curriculum.

Today children and young people are growing up in a risk averse society. We provide a unique context for the development of effective learning outside the classroom that will assist your students to develop a range of pro-social behaviours, problem-solving, collaboration and interpersonal skills all based on principles of respect, effort, helping others and becoming a self-directed learner.

Our programs will address general capabilities including; Critical and Creative Thinking.

Focus Areas in the Australian Curriculum are:

Health & physical education

Relationships and sexuality

Safety

Active play & minor games

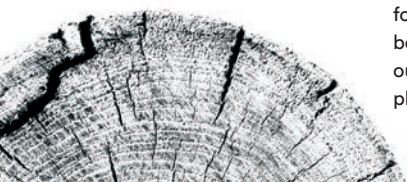
Challenge & adventure activities

Fundamental movement skills

Lifelong physical activities

Come and climb to new heights and allow your children and young people to bring out their brave with up to 2-hours of hosted climbing and applying our (year specific) dynamic lesson plans to enhance the learning outcomes and experience for Years 1-10.

These programs are especially powerful for schools that are seeking a safe framework and environment. School groups may be booked without using our lesson plans, but it is strongly recommended to get the most out of the experience. Sessions for up to 15 climbers can be booked directly online or through our booking coordinators by phone or email.





## What's included

Pre-learning lesson plan

---

During learning activities

---

Post-learning lesson plan

---

A TreeClimb Host

---

## Pricing

### Grand Course

\$35 pp

---

If more than 50 climbers  
per school term \$31 pp

---

Minimum height 135cm

---

### Children's Course

\$29 pp

---

Minimum height 100cm

---

## How to book

For up to 15 climbers or available sessions, please book online at [treeclimb.com.au](https://treeclimb.com.au).

If you have an enquiry or are booking for a group larger than 15, please phone 0411 268 486 or email at [hello@treeclimb.com.au](mailto:hello@treeclimb.com.au).

## Bus Parking

There are various locations within a short walk to TreeClimb where you may park a bus. Once you have made your enquiry or booking, we can share these maps and locations with you to share with your group organiser and bus driver.

## Public Transport

Primary school students and a maximum of four adults can travel free between 9.30am and 3.00pm Monday to Friday including school holidays. A group travel pass is required for primary school groups to travel for free. This needs to be arranged prior to travel by Adelaide Metro via the group booking email. A letter with the school's letterhead must be attached to the email.

Visit [adelaidemetro.com.au/about-us/for-schools](https://adelaidemetro.com.au/about-us/for-schools) for more information.

## Catering

Being in the Adelaide Park Lands means we encourage you to BYO food and beverage. We have a café on site for hot and cold beverages and snack foods and upon request can have pies, sausage rolls and pasties cooked fresh for your group. We also recommend checking out Just Down the Road for Catering: [jdr.com.au/catering](https://jdr.com.au/catering).

## Schools & Excursions Guidelines

For all ratios and outdoor excursion information in SA, be sure to check out: [education.sa.gov.au/doc/camps-and-excursions-guidelines-schools-and-preschools](https://education.sa.gov.au/doc/camps-and-excursions-guidelines-schools-and-preschools).

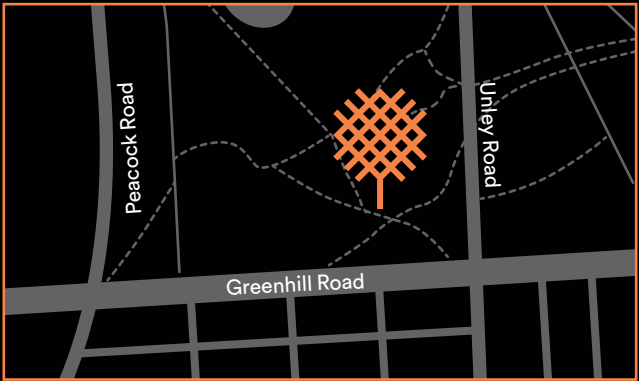
We encourage you to come and look before you book.

“We had our whole school excursion to Tree Climb!  
What a great day was had by all, with everyone taking  
on new challenges and testing out their growth mindset  
and persistence. Even some staff had to face some  
challenges with great support from students. We were  
really impressed by everyone’s support for one another and  
everyone’s commitment to take on their own challenges.  
Well done everyone on a great day of learning and fun!”

**Felixstow Community School**



In collaboration with City of Adelaide, we encourage you to take your waste and recycling with you to keep our park clean and green!



Corner Greenhill and Unley Road  
Adelaide South Australia 5000  
info@treeclimb.com.au  
[treeclimb.com.au](http://treeclimb.com.au)